



AIR HOSE

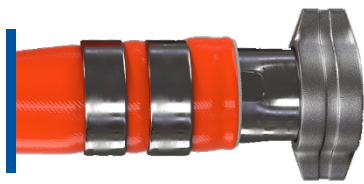
High Pressure Lay Flat Compressed Air Hose

Features:

- Light, yet rugged and hard-wearing hose.
- The low weight, combined with a high-pressure rating, makes the hose popular and easy to use.
- The hose does not stretch when pulled and has a very high-pressure rating versus wall thickness.
- Excellent abrasion resistance.
- Double Jacket hose with TPU outer layer / Inner layer

Design:

- Double jacket hose solution ensuring high burst pressure, puncture resistance and flexibility
- High tensile polyester weaves covered and lined with an ultimate abrasion- and oil resistant Thermoplastic polyurethane (TPU).
- Field proven hose with long track record.
- Lengths up to 131 feet (40m).
- **High working pressure 633psi and nominal burst pressure 2535psi for 2"**.
- High flexibility.
- Easy handling – low weight compared to conventional hose.
- **High operating pressure and temperature Max. 110°C / +230°F.**



PART NO.	Inner Diameter		Wall Thickness		Tensile Strength		Burst Pressure		Weight	
	Inch	mm	ft/m	ft/m	x1000 lbs	Tons	PSI	Bar	Lb/Ft	Kg/m
OLMH-200-633	2	51	0.17	4.4	31.7	14.3	2535	175	0.55	0.82
OLMH-300-435	3	76	0.18	4.5	46.6	21.0	1740	120	0.83	1.24



NOTE: MINIMUM SAFETY FACTOR BP/WP IS 4:1 (25%) FOR COMPRESSED AIR (ISO 7751:1991)
COUPLING 2" DESIGNED AND APPROVED BY ATLAS COPCO.

Whip check cable recommended for safety