



CONCRETE HOSE

Boom Placing Steel Wire Hose

Application:

Mandrel built steel wire reinforced concrete placement hoses for concrete pumping. Available on standard and custom lengths, and swaged with heavy duty and metric full flow Victaulic fittings at 62/64 HRC.

Tube:

High abrasion resistant conductive black rubber NBR.

Reinforcement:

High strength brass coated spiral steel wires.

Cover:

Weather, ozone resistance, abrasion resistant, black SBR/EPDM rubber.

Working Pressure:

1233 PSI, 85 bar

Nominal Burst Pressure:

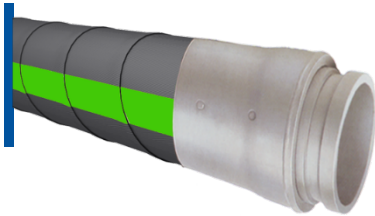
2466 PSI, 170 bar






Temperature:

-40°F/+158°F (-40°C /+70°C)

Marking:

 PARAGON



 PART NO.	 Inner Diameter		 Outside Diameter		 Weight		 Min. b. r.
	Inch	mm	Inch	mm	Lbs./Ft	Kg/m	Inch
CBSH-200-1233-M-L	2	51	2.75	70	1.7	2.6	10.8
CBSH-250-1233-M-L	2 ½	63.5	3.46	88	2.6	3.9	11.8
CBSH-300-1233-M-L	3	76	4.0	102	3.8	5.6	13.7
CBSH-400-1233-M-L	4	102	5.04	128	4.6	6.9	15.7
CBSH-500-1233-M-L	5	127	6.10	155	5.8	8.6	19.6