

WATER HOSE Water Discharge Hose

Application:

Water discharge hose for water and non-corrosive fluids. Suitable for irrigation systems, agricultural vehicles, dewatering construction projects and industrial wastewater.

Tube:

Black smooth EPDM rubber.

Reinforcement:

High tensile textile plies.

Cover:

Black, smooth finish rubber, weather and abrasion resistant rubber with fabric impression.

Working Pressure:

150 PSI, 10 bar

Nominal Burst Pressure:

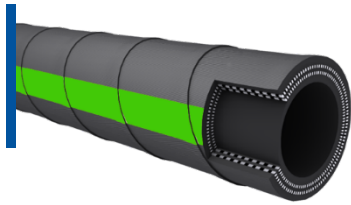
450 PSI, 30 bar

Temperature:

-40°F/+176°F (-40°C/+80°C)

Marking:

 PARAGON



 PART NO.	 Inner Diameter		 Outside Diameter		 Weight		 Max. L
	Inch	mm	Inch	mm	Lbs./ft	Kg/m	ft/m
RWDH-200-150-200	2	51	2.24	57	0.38	0.57	200/61
RWDH-250-150-200	2½	63	2.60	66	0.44	0.65	200/61
RWDH-300-150-200	3	76	3.27	83	0.65	0.97	200/61
RWDH-400-150-200	4	102	4.33	110	1.01	1.50	200/61
RWDH-500-150-200	5	127	5.35	136	1.43	2.13	200/61
RWDH-600-150-100	6	152	6.26	159	1.54	2.29	100/30.5
RWDH-800-150-100	8	203	8.38	213	2.75	4.09	100/30.5
RWDH-1000-150-100	10	254	10.39	264	3.28	4.88	100/30.5
RWDH-1200-150-100	12	305	12.52	318	4.61	6.86	100/30.5



To order hose use part number starting RWDH-size-150-LL, for 6" RWDH-600-150-50'. Hose assemblies with Bauer couplings and Camlock are available on request.