

# Hydraulic Hose

## SAE 100R13/DIN EN 856 Hydraulic Hose

**Application:**

This hose designed for hydraulic system and high peak pressures. Meet flame resistance under MSHA standard.

**Tube:**

High quality oil resistant synthetic rubber compound.

**Reinforcement:**

Up to 1" is 4 and from 1 1/4" is 6 spiral high tensile steel wires.

**Cover:**

Abrasion and weather resistant synthetic rubber.

**Working pressure:**

5,075 PSI

**Nominal burst pressure:**

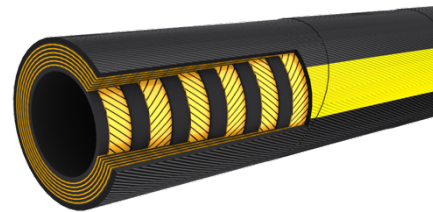
20,300 PSI

**Temperature:**

-40°F/+212°F.

**Marking:**





Nominal ID		Hose ID	Max. Hose OD		Working Pressure		Burst Pressure		M. Bend	Weight
Inch	Dash	mm	Inch	mm	Psi	Bar	Psi	Bar	Inch	Lb/ft
3/4"	-12	19	1.3	33.2	5075	350	20300	1400	9.5	1.05
1"	-16	25	1.56	39.8	5075	350	20300	1400	11.8	1.29
1 1/4"	-20	32	2.02	51.3	5075	350	20300	1400	16.5	2.55
1 1/2"	-24	38	2.31	58.8	5075	350	20300	1400	19.7	3.2
2"	-32	51	2.86	72.7	5075	350	20300	1400	25.2	4.53